



**Laminated timber, houses and beams  
from leading Siberian low raised houses production**

**Novosibirsk, Russia**

**[www.skmd.ru](http://www.skmd.ru)**

Kind regards,  
Pavel N. Pronin  
Director

+7 923 730 00 18

+7 915 069 11 20

[ppn@skmd.ru](mailto:ppn@skmd.ru)

[proninpn@mail.ru](mailto:proninpn@mail.ru)



SKMD LLC (Novosibirsk) is the biggest manufacturer of glued laminated (glulam) timber in Siberia since 2003.

The vast range of products and services that our company offers to clients all was made possible due to a highly professional team, mighty Siberian timber and unmatched quality of European equipment.

**SKMD offers:**

- 14 years of experience;
- Length of laminated beams is up to 18 meters;
- Beams up to 2,5 meter in height;
- Up to 40 000 m3 of glulam annually;
- More than 30 000 m2/year of glulam houses;
- 3 types of siberian wood: siberian pine, larch and cedar;



# Products



Glued laminated timber  
Species: pine  
Length: up to 18 m.  
Size: 140/165/185 x 168/210/250



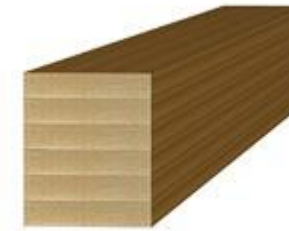
Glued laminated timber  
Species: **larch**  
Length: up to 18 m.  
Size: 140/165/185 x 168/210/250



Glued laminated timber  
Species: **cedar**  
Length: up to 18 m.  
Size: 140/165/185 x 168/210/250



Construction laminated beams  
Species: pine  
Length: up to 18 m.  
Size: from 80x80 to 2000x200



Construction laminated beams  
Species: larch  
Length: up to 18 m.  
Size: from 80x80 to 2000x200





# Our beams





# Our beams





# Our houses





# Bungalo



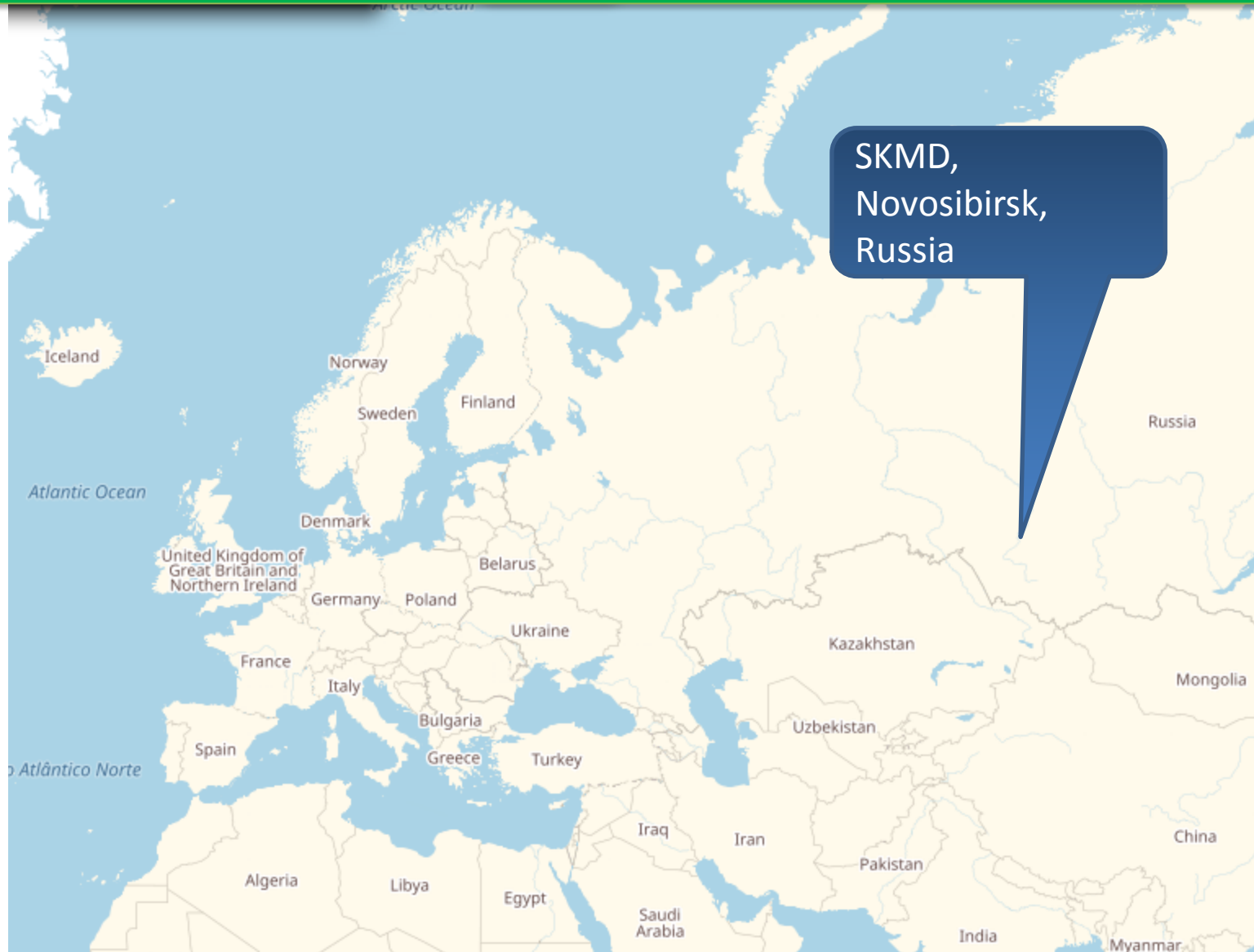


# Projects examples

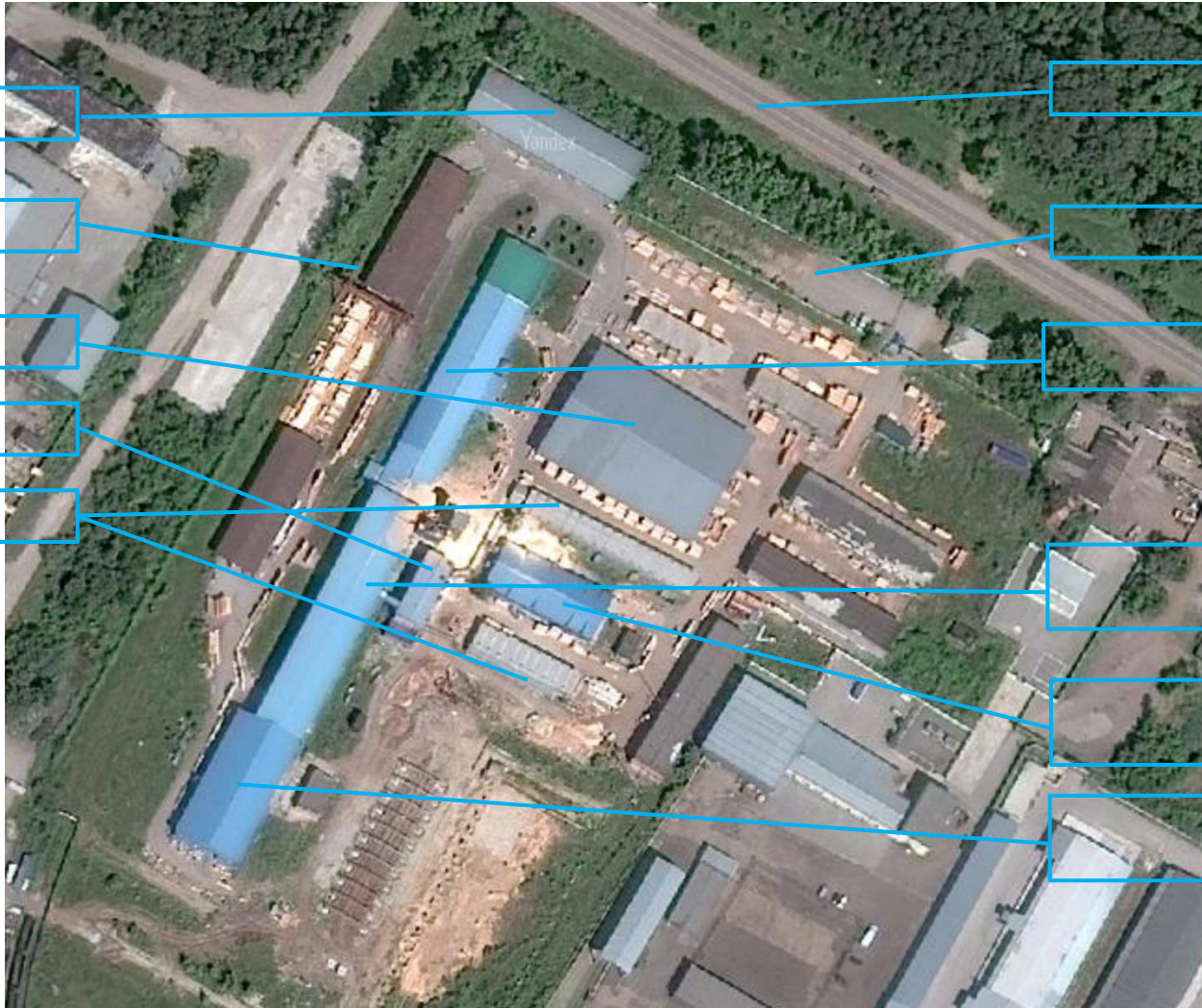




# Location - Russia, Novosibirsk



# Territory



Storage

Rail Road

Storages

Heating pump

Drying cameras

Airport highway

Entrance

Production area 1

Production area 2

Production area 4

Production area 3



# Production

In order to provide the clients with the best possible quality glulam, SKMD uses only the best European equipment (Weining, MuHLBOCK, Makron, Uniteam).

Besides, we have:

- Eight drying cameras (MUHLBLOCK, Austria), 150 m3 each;
- Splicing and defects removal equipment (Weinig);
- Calibrating and adhesive dispensing equipment (KUPFERMÜHLE and AkzoNobel);
- Horizontal presses;
- Profiling, calibration and cutting equipment (Rex, Doma, Makron, Uniteam);

All products tested in our own laboratory, which allows us to get the highest possible quality.



# Contacts



630052, Russia, Novosibirsk, Tolmachevskaya st. 43/3

+7 383 363 15 00

[www.skmd.ru](http://www.skmd.ru)

Kind regards,  
Pavel N. Pronin  
Director

+7 923 730 00 18

+7 915 069 11 20

[ppn@skmd.ru](mailto:ppn@skmd.ru)

[proninpn@mail.ru](mailto:proninpn@mail.ru)